

19TH EUROPEAN
CONGRESS OF CLINICAL
NEUROPHYSIOLOGY

9-12 SEPTEMBER

ECCN LONDON 2025

NEUROPHYSIOLOGY THROUGH THE AGES

BSCN

Founded as
the EEG Society
in 1942



International Federation of
CLINICAL NEUROPHYSIOLOGY

EXHIBITION MANUAL 2025



#ECCN2025

WELCOME



1ST EEG CONGRESS, LONDON 1947

On behalf of the European Congress for Clinical Neurophysiology (ECCN) organising committee, we extend a warm welcome to you as sponsors for the upcoming Congress for Clinical Neurophysiology, scheduled to be hosted in the European vibrant city of London in September 2025.

The British Society of Clinical Neurophysiology (BSCN), the oldest neurophysiology society in the World since 1942, in collaboration with the European, Middle East and Africa Chapter (EMEAC) of the International Federation of Clinical Neurophysiology (IFCN) will be hosting ECCN 2025. Our proposed theme is "NEUROPHYSIOLOGY THROUGH THE AGES" to celebrate the rich heritage of scientific discovery and advances in the field of clinical neurophysiology in the historical venue of Central Westminster Hall, London.

Topics will include highlights in Clinical Neurophysiology from past, present and future in neonates to adults.

The ECCN is a premier gathering of leading experts, researchers, clinicians, and industry professionals in the field of clinical neurophysiology, representing a unique platform to exchange knowledge, showcase innovations, and advance the understanding and practice of neurophysiological medicine. By choosing to partner with us as sponsors, you are not only aligning your brand with excellence and innovation in neurophysiology but also demonstrating your commitment to advancing healthcare and improving patient outcomes.

Thank you for considering sponsorship of the European Congress for Clinical Neurophysiology. Together, we can create a memorable and impactful ECCN2025 that will inspire, educate, and empower neurophysiology professionals for years to come.

Warm regards,



DR JACQUIE DEEB

**Chair,
Local Organizing Committee**



PROFESSOR HATICE TANKISI

President EMEAC-IFCN





CONTENTS



SECTION TITLE	PAGE NUMBER
Location	4
Programme	5
Floor Plan	6
Sponsorship Categories Exhibitor	7
Prospectus	8-13
Additional Collaborations	14
Terms & Conditions	15-16

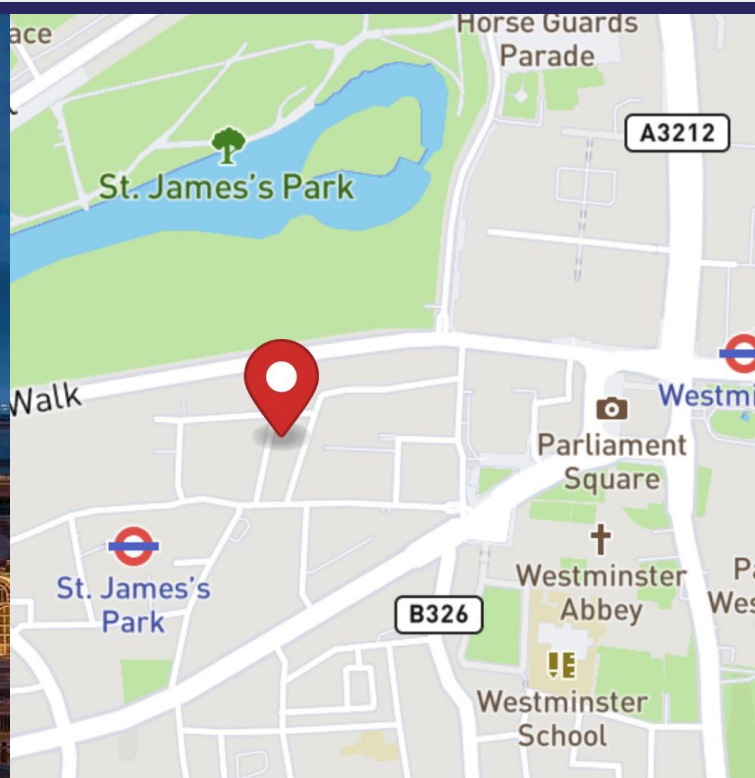


LOCATION

Central Hall Westminster is an iconic Grade II listed building with a rich history. It was opened in 1912 and has since hosted numerous historic events, including the first-ever meeting of the United Nations General Assembly in 1946. The historic architecture of Central Hall Westminster, venue's grandeur and prestige adds a unique atmosphere to conferences, creating a memorable experience for attendees, leaving a lasting impression on participants.

Situated in the heart of London, Central Hall Westminster is easily accessible by public transportation, making it convenient for both local and international delegates to attend. It is also wheelchair accessible, with facilities to accommodate guests with disabilities.

Exhibition will be in the Library and Lecture Hall. These are 2 rooms which will be formed into one large room for the duration of ECCN.



PROGRAMME

DATE	ACTION
Tue 9th Sept	Exhibitor Set up from 14:00
Wed 10th Sept (08:00-19:30)	Exhibition open and evening networking in the exhibition hall (18:30-19:30)
Thurs 11th Sept (08:00- 18:30)	Exhibition open
Fri 12th Sept (08:00-12:30)	Exhibition open and dismantling from 12:30pm

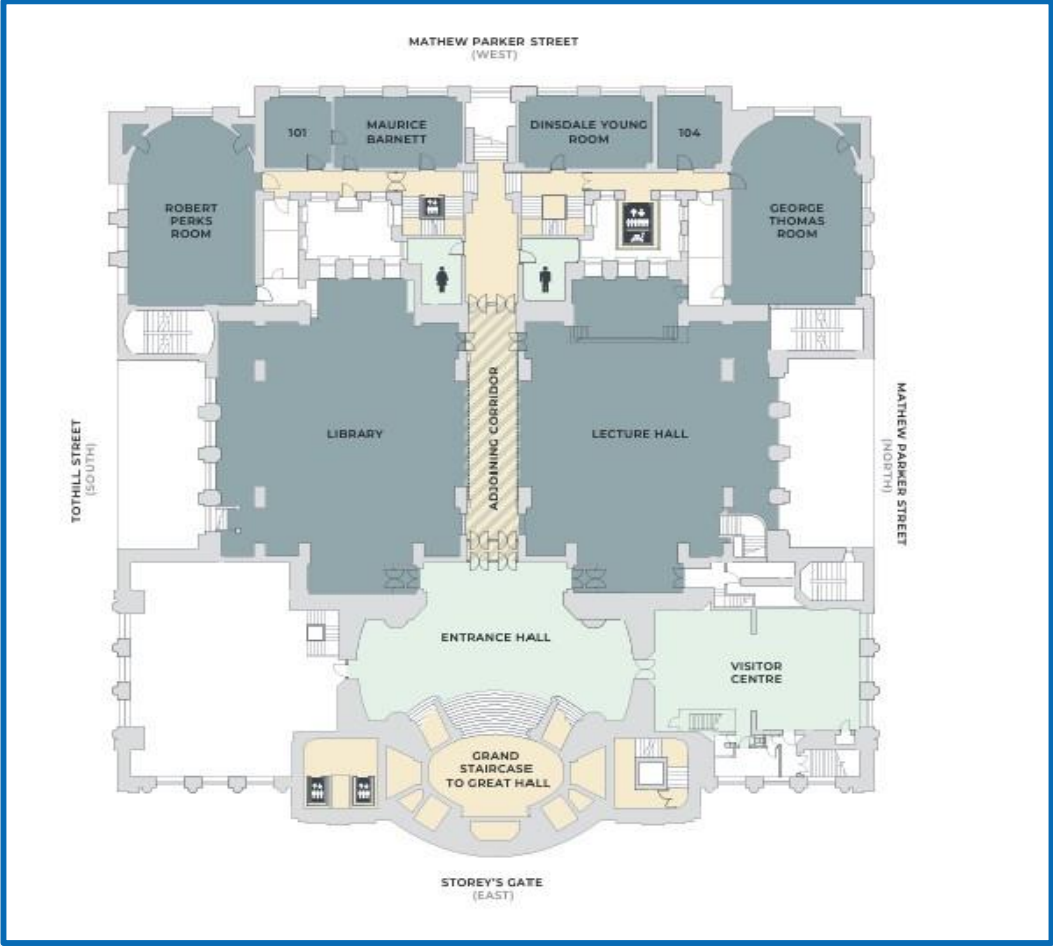
***ECCN will close at 6:30pm on Friday 12th September 2025
We advise dismantling exhibition from 12:30pm for a 3pm-4pm
departure.***

TOPICS

- Artificial Intelligence and Big Data
- Nerve and Muscle Ultrasound
- Neurocritical Care
- Advances in Epilepsy & Epilepsy surgery
- EMG & Peripheral Neurophysiology
- Paediatric & Neonatal Electrophysiology
- Neuromodulation
- Intra-operative Monitoring
- Sleep and Consciousness
- Movement Disorders
- Human Neurophysiology



FLOOR PLAN



SPONSORSHIP CATEGORIES

	PLATINUM	GOLD	SILVER	BRONZE
Number	1	3	4	15
GBP	£28,000	£20,000	£15,000	£10,000
Add-on	Includes a sponsored symposium	Includes a practice workshop		
Choice of space	Premium space allocated	First priority (first come basis)	Second priority	
Space	20sqm Shell Scheme stand can be removed on request	15sqm Shell Scheme stand can be removed on request	12sqm Shell Scheme stand can be removed on request	6sqm Shell Scheme stand can be removed on request
Badges for full access	3	2	0	0
Exhibitor badges (exhibition room only)	2	2	3	2
Congress publications	Priority acknowledgement	Acknowledgement	Acknowledgement	Acknowledgement
Sponsor Bio	250 words on Website	100 words	50 words	
Sponsor logo	On Congress holding slides and signage	On Holding sides and signage	On Holding sides and signage	On Holding sides and signage
Company logo	Largest on the congress signage Company logo with web link to appear on ECCN 2025 website as Platinum sponsor	Included in the signage - web link to appear on the congress website	Included in the signage - web link to appear on the congress website	Included in the signage - web link to appear on the congress website
Congress bag	1	1	1	1
Newsletter banner	Company logo will appear in newsletter sent to over 10,000 contacts			
Small private meeting room	Yes	No	No	No



EXHIBITOR



SHELL SCHEME - £700 PER SQ.M

Standard rate with a minimum of 6 sq.m It includes:

- Exhibitor's badge (according to the number of sq.m ordered)
- Access to coffee breaks and welcome reception for registered exhibitors
- Mention of the company logo on the congress website, mobile app & final program
- Shell scheme frame, fascia panel with standard lettering, basic lighting and electricity
- 1 table & 2 chairs

Under no circumstances must anything be nailed, screwed or glued to the shell scheme panels or metal framework of the stand.

All damage will be charged to the exhibitor at full replacement costs.

Please inform us if you wish to use your own stand builder so that the relevant arrangements can be made.



EXHIBITOR

Extras such as graphics and extra/different furniture can be ordered with GES directly by the exhibitor.

The online shop will close on Thursday 4th September. After this date furniture items may not be available.

Graphics ordering dates and artwork submission dates may differ but will be clearly listed on the shop and order forms.

Exhibitors can contact GES customer services team at eccnlondon@ges.com for any assistance and information on their build.

Freight forwarding can be handled by GES logistics team and arranged by emailing event.logistics@ges.com

Items can be delivered by freight forwarder to Central Hall Westminster, up to 72 hours prior to the event. If sending directly to the venue, please ensure that the delivery label document sent out along with this manual is filled in and returned to eccnexhibitions@worldspan.co.uk

Exhibitor Care Team contact number: 02476 380 190

Live chat service: [GES Online Chat](#)

Exhibitor Care Team Email address: eccnlondon@ges.com

Both are available 08:30–17:00, Monday to Friday.

Orders can be placed through GES Shop Link: [Expresso by GES](#)



EXHIBITION LOADING AND DELIVERIES

Access Point 1: Loading Bay on Matthew Parker Street

- The loading bay is located at the rear of the building on Matthew Parker Street and normal opening hours are Monday – Friday: 08:00 – 17:00
- To arrange access outside of these hours, please liaise with your Event Manager.
- Load-in/load-out only, no parking available. *This access is advised for larger items.*



Access Point 1: Loading Bay and Good's Lift Information

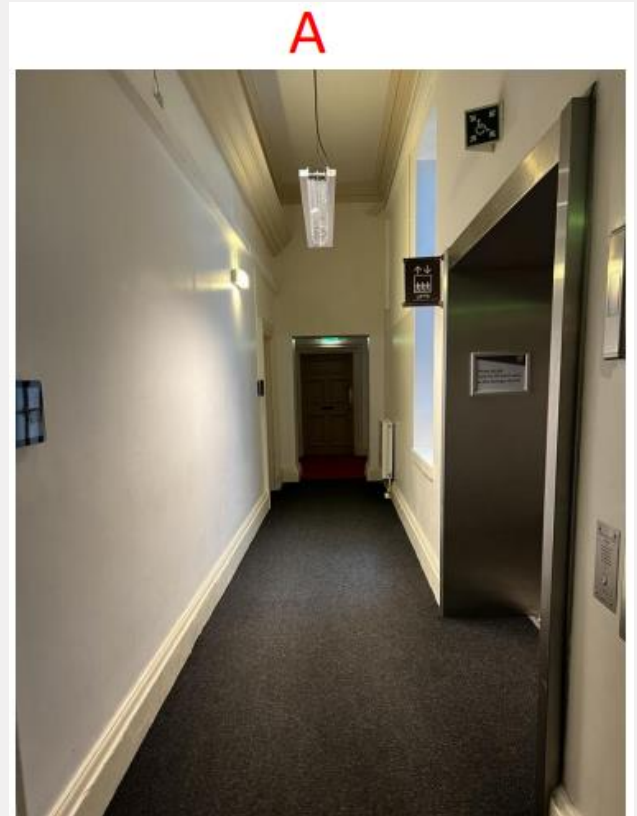
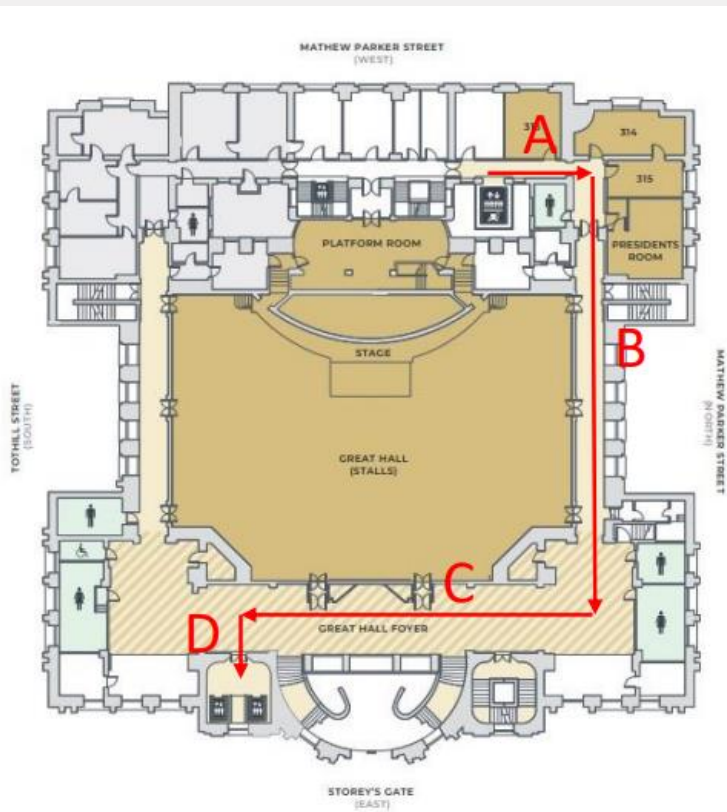
- This access point can operate until 22:59 due to noise restrictions. For load out/in past 23:00 using the good's lift, please see Access Point 2.
- Good's Lift dimensions: 175cm wide, 196cm high and 290cm deep. Weight limit of 3000Kg.
- Door's dimensions: 118cm wide, 195.6 high
- Step free with a turn from loading bay into lift corridor



EXHIBITION LOADING AND DELIVERIES

Access Point 1: Level 1 to Lecture Hall & Library

- Step free access from loading bay to Lecture Hall & Library via Great Hall Foyer
- Caution required around the walls and floor.
- Front of house passenger lifts: Dimensions: 86cm wide, 195cm high and 197cm deep. Weight limit of 3000Kg.



B



C



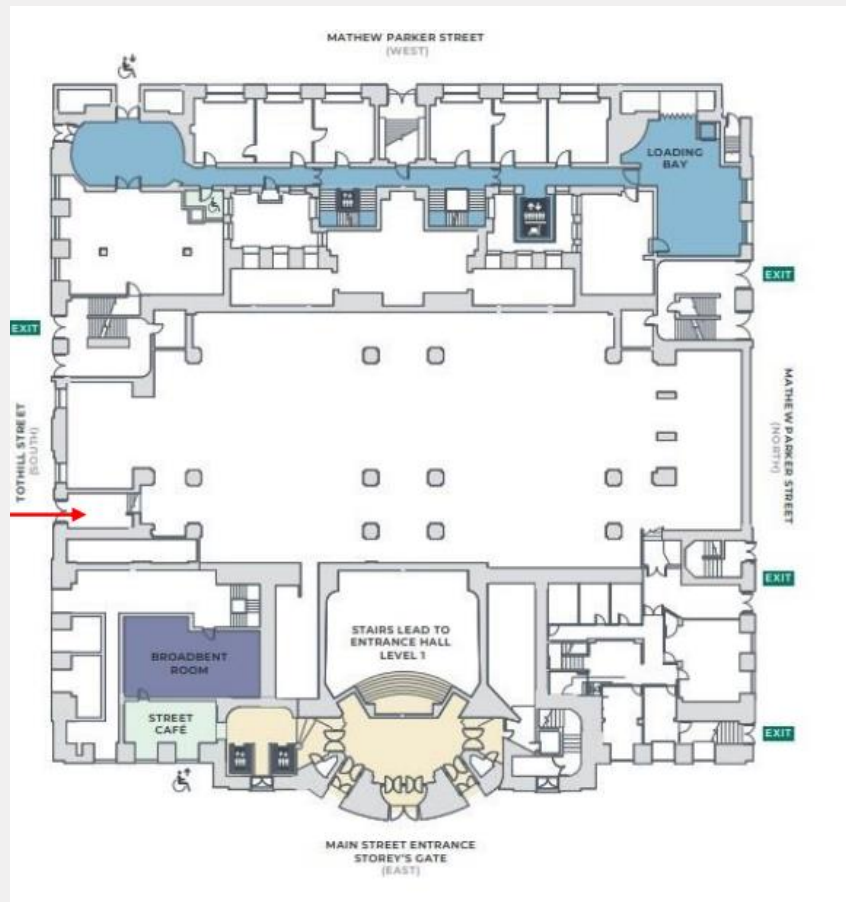
D



EXHIBITION LOADING AND DELIVERIES

Access Point 3: Side Entrance on Tothill Street to Library

- Side access for Library and Lecture Hall only.
- Busy Street with reasonable amount of foot traffic, early morning load in / late night load out is recommended.
- Limited and controlled parking – *Parking Suspension may be required*
- Steps at main entry point
- Straight run corridor to steps up to Library



CAR PARKING

Parking Arrangements

The building is located within the central London Congestion Charge zone. The ULEZ and LEZ operate 24 hours a day everyday and covers central London.

If you are driving to ECCN, you can park your vehicle in one of several public car parks, located nearby in:

- Abingdon Street
- Horseferry Road
- Rochester Row
- Semley Place

There is also public parking adjacent to our building, on Tothill Street and Matthew Parker Street. If you have an EV or hybrid car, we advise you check electric vehicle charging points.



ADDITIONAL COLLABORATIONS

CONGRESS BAGS - £6,000

Company logo on every congress bag

BADGE LANYARDS - £5000

Company logo on every congress lanyard

WELCOME COCKTAIL RECEPTION - £9,500

Company logo displayed in the welcome cocktail signage

COFFEE BREAK - £2,075 PER DAY

Company logo placed on the coffee break tables (one day)

EVENT APP - £5,000

Company logo to be prominent on the Event App

WATER BOTTLES - £4,000

Company logo on re-usable water bottles

NOTEBOOK - £2,075

Company logo on congress notepads, which will be put into the congress bag for all delegates

PENS - £2,075

Company logo on congress pens, which will be put into the congress bag for all delegates

BAG INSERT - £2,000

Promotional leaflet, or similar, inserted in the congress bag

PRIVATE MEETING ROOM - £1500 PER ROOM PER DAY

The use of a private meeting room for business meetings during the congress on Wednesday and Thursday. (booking is on a first come first served basis and is subject to availability)

COFFEE MUGS - £4,500

Company Logo on recyclable coffee cups

If you wish to add any of the above to your exhibition, please inform us.



TERMS & CONDITIONS

The terms and conditions set out below relate to any bookings for exhibition, sponsorship, or advertising packages for the 19th European Congress of Clinical Neurophysiology on 9th-12th September 2025 at Westminster Central Hall, London.

Cancellation on or before Friday 27th June 2025 will incur a cancellation fee of 50%.

Cancellation after Friday 27th June 2025 will incur a cancellation fee of 100%.

In the event of cancellation, bank or credit card charges incurred by ECCN will not be refunded.

The organisation making this booking will be liable for any breach of the Terms & Conditions. This includes if the booking is being organised on behalf of a third party.

Payment may be made by credit/debit card (VISA/MasterCard) or bank transfer in GBP £ only.

If payment is made by wire transfer, the organisation making this booking will be liable for all costs/charges, on both sides.

Full payment must be received and cleared no later than 30 days after the date of booking. Late payment fees may be applicable after this date.

All payments must be made prior to the start of the congress. All payments must be received and cleared no later than midnight on Friday 19th July 2025. Late payment fees or refusal into the exhibition may be applicable after this date.

ECCN holds the right to retain any payment already received.

Entrance to the venue and congress will not be permitted without prior full payment.

Exhibitors and sponsors will be subject to UK VAT.

Travel to London and accommodation is not included in the booking fee.

All packages and opportunities are available on a first-come, first-served basis, including exhibition space/ location, which is secured at the time of booking.



TERMS & CONDITIONS

The Exhibition floor plan is subject to change.

Listings on the ECCN Congress website, will be in alphabetical order under the following hierarchy: Platinum partner, Gold Partner, Silver Partner, Bronze Partner, 3m x 3m package etc.

Supply of logos, company descriptions and adverts for the Annual Meeting website is the responsibility of the sponsor/exhibitor.

If files are not received in the required format or by the supplied deadline, then the Meeting organisers bear no responsibility, and any cancellations will be subject to the fees mentioned above.

Supply of details of the Promoted Industry Sessions is the responsibility of the sponsor/exhibitor.

The AV equipment supplied for Promoted Industry Sessions will be the basic equipment included for the main Annual Meeting sessions; the cost of any additional equipment must be covered by the sponsor/ exhibitor.

The Meeting organisers will make their best efforts to schedule no more than one Promoted Industry Session at any one time.


Sponsors of physical items for the Meeting will be consulted as to the type of item selected, however the final decision rests with the Meeting organisers.

By completing this booking, you are consenting for Worldspan Ltd and ECCN to remain in contact with you until the Meeting has ended. We will only contact you with further information from either ECCN or Worldspan if you have opted to receive communications from us as part of your booking. If you do not wish to receive future correspondence from us or any third party involved in this conference, please write to the ECCN Secretariat at ECCN@worldspan.co.uk

It is the responsibility of the Exhibitor to be covered by the relevant insurances including public liability insurance and to complete the relevant health and safety documentation.

ECCN may arrange for photographs, video recordings or live streaming to be taken during the event. Any subsequent photographs or recordings will remain the property of ECCN and may be used for promotional purposes. Other third parties (including exhibitors) may also arrange for photographs or recordings to be taken during the event. By submitting this registration form, you are agreeing to the photographing and/or filming of the proceedings.





We are happy to present a range of options for our exhibitors and sponsors but recognise that you may have specific requests for your presence at ECCN 2025 and we are happy to discuss tailoring packages to meet these needs.

To secure or discuss any of these opportunities, please email
ECCNexhibitions@worldspan.co.uk

Click here to go to our website: <https://www.eccn2025-london.com>

During ECCN, please contact the number below regarding exhibition;

+44 (0)7385662887

